

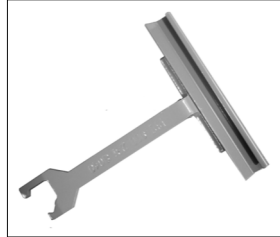
ALL Cleat Tool

Detail

- Designed to install CL WARD ALL-Cleat and Tri-Cleat
- Easy to use

Directions

1. Insert cleat into the Cleat Tool.
2. Hook onto frame near corner, apply pressure to handle so the cleat tool compresses frames and cleat snaps on.
3. Work towards the center of duct.



CONTACT

Office: 888.973.7600

1100 Ashwood Drive
Suite 1102
Canonsburg, PA 15317
Can

www.clward.com

Packaging

Item Code	Description	Packaging	Weight
TDCCLIPTOOL	ALL Cleat Tool	Each	1 lb

Cleat Spacing

Static Pressure	Recommended Centers
1/2" to 2"	24" centerline
2" to 4"	18" centerline
4" to 10"	12" centerline
Over 10"	Continuous