

CRD - 58DC/58EAC Series

Detail

- Insulated register boot with ceiling radiation damper
- UL Classified - For use in UL 263 wood truss floor/ceiling assemblies rated 1 hour
- UL approved for use in L-587 and L-528 and P-556 design
- Incorporates UL 555C evaluated CRD
- 22 gauge one piece frame and blades
- 165°F fusible link (optional 212°F)
- Standard Link (on 4") and Easy Access Link (5" and up)
- **58DC** - Ductboard box included, **58EAC** - Ductboard box not included
- Ceramic thermal blanket provided on units with blade areas of greater than 84 sq. in.
- Available in a range of sizes from 6" diameter to 14" diameter



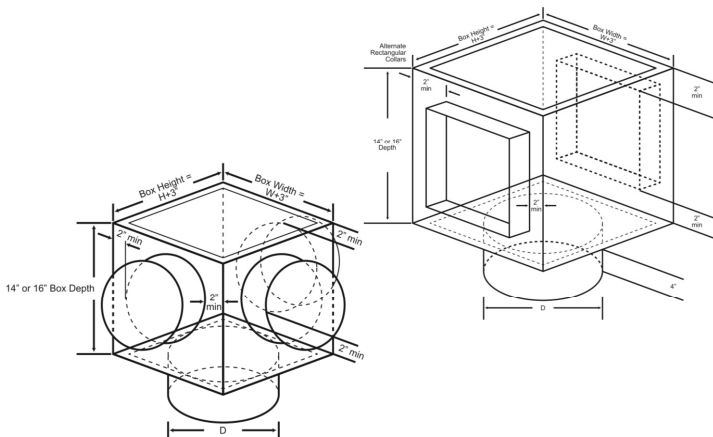
CONTACT

Office: 888.973.7600

1100 Ashwood Drive
Suite 1102
Canonsburg, PA 15317

www.clward.com

Profile



Item Code Format

5	8	D	C	1	2	0	8	G	1	R	6	1	4
---	---	---	---	---	---	---	---	---	---	---	---	---	---

SERIES: CRD 58 w/Ductboard Box
 Factory Installed Box C - Round Duct Drop
 Box Size 12 = 12" x 12" Box 16 = 16" x 16" Box
 Collar Diameter 06 = 6" 08 = 8" 10 = 10" 12 = 12" 14 = 14"
 G = Galvanized 165° Link H = Galvanized 212° Link
 1" Flange
 R6 = 1 1/2" Insulation R8 = 2" Insulation
 Box Height 14 = 14" 16 = 16"

5	8	E	A	C	1	2	0	8	G	1	R	6
---	---	---	---	---	---	---	---	---	---	---	---	---

SERIES: CRD 58 w/Ductboard Box
 Field Fabricated Box Connection at bottom of box C - Round Duct Drop
 Box Size 12 = 12" x 12" Box 16 = 16" x 16" Box
 Collar Diameter 06 = 6" 08 = 8" 10 = 10" 12 = 12" 14 = 14"
 G = Galvanized 165° Link H = Galvanized 212° Link
 1" Flange
 R6 = 1 1/2" Insulation R8 = 2" Insulation



Job Name	
Location	
Architect	
Engineer	
Contractor	